

**The  
Colby Pass**

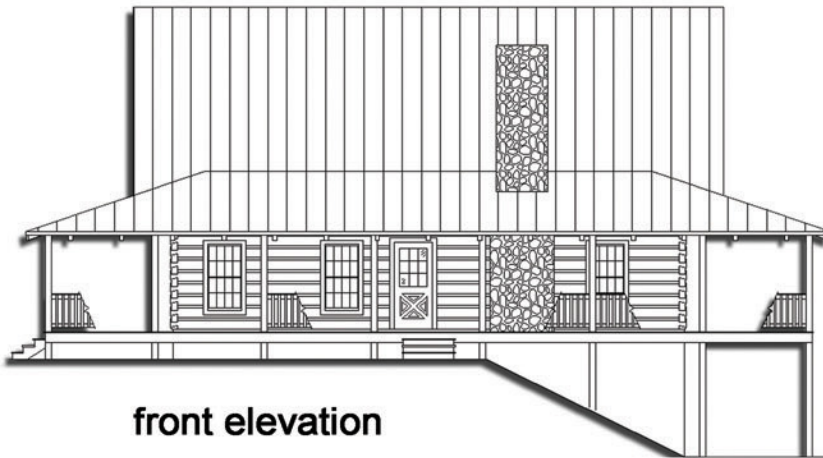
Bedrooms: 2  
Bath: 2.5

**Square Footage**

Total Heated  
Living Space: 1,959 sq ft

1st Floor: 1,200 sq ft  
2nd Floor: 759 sq ft

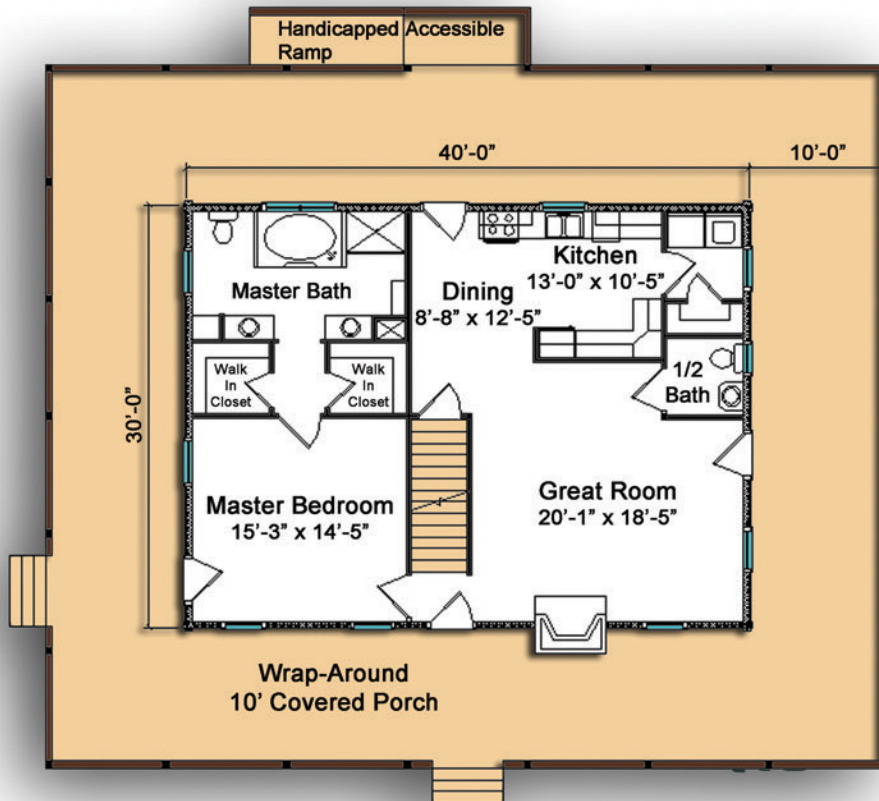
Porches: 1800 sq ft



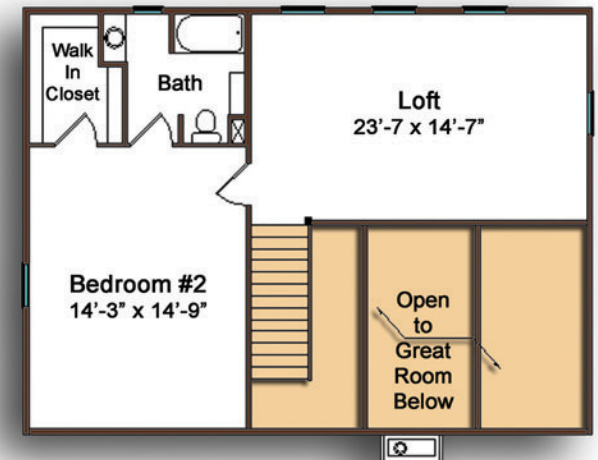
front elevation



right elevation  
garage / basement is optional



1st floor



2nd floor

**Fireside  
Log Homes**

Ellijay, GA office  
P.O. Box 1136  
516 River Street  
Ellijay, GA 30540

800-521-5647

Asheville, NC office  
360 Rockwood Rd.  
Arden, NC 28704

888-434-3463

[www.firesideloghomes.com](http://www.firesideloghomes.com)