

**The
Whistler Cove**

Bedrooms: 3
Bath: 2.5

Square Footage

Total Heated
Living Space: 1,934 sq ft

1st Floor: 1,272 sq ft
2nd Floor: 662 sq ft

Porches: 337 sq ft
Decks: 309 sq ft

**Fireside
Log Homes**

Ellijay, GA office
P.O. Box 1136
516 River Street
Ellijay, GA 30540

800-521-5647

Asheville, NC office
360 Rockwood Rd.
Arden, NC 28704

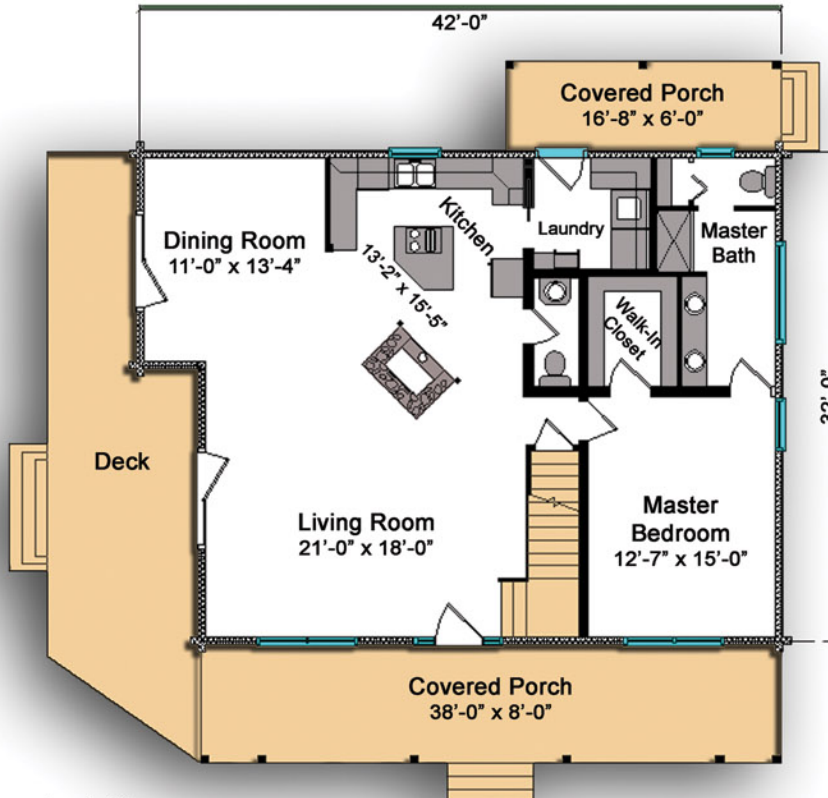
888-434-3463



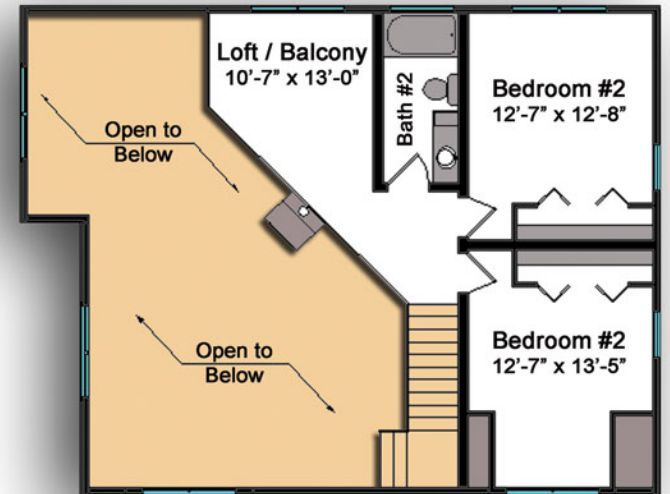
front elevation



left elevation



1st floor



2nd floor

www.firesideloghomes.com